

## Vegetation Trends and Cycles in Fire-Prone Landscapes of Lake, Napa and Sonoma Counties

Webinar, Weds. March 15. 11:00 AM – 12:00 AM

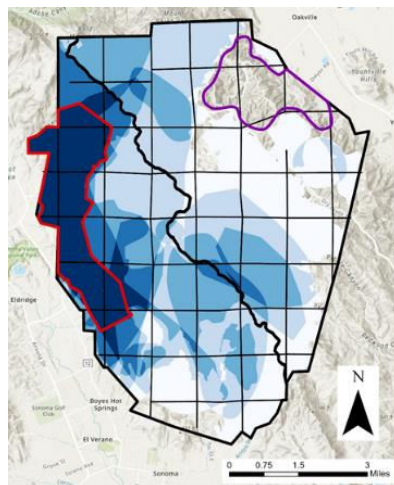
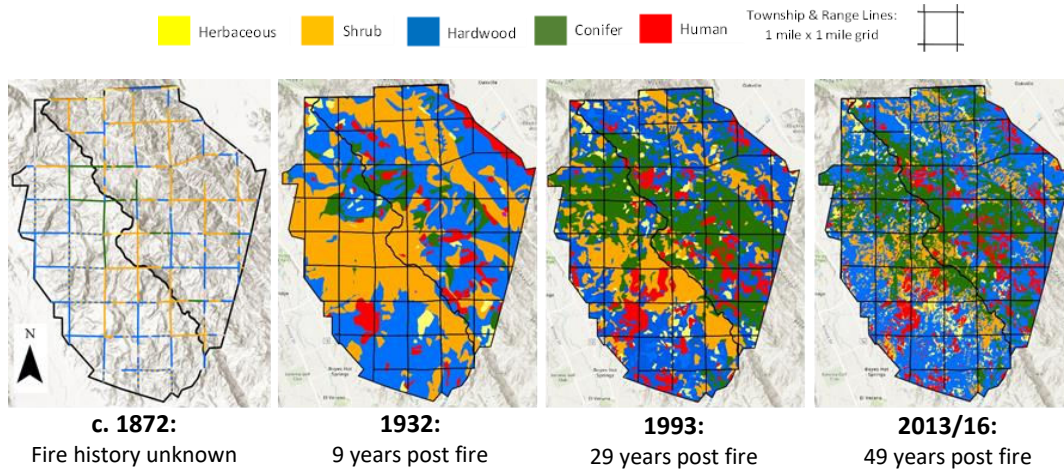
In this webinar, historical ecologist Arthur Dawson presents the findings of a three-year CALFIRE-funded study conducted in partnership with Pepperwood, Mark Tukman, and Dr. Jim Thorne. Arthur will trace the story of fire and vegetation in the North Bay over the last 150 years. Integrating a wide variety of sources reveals the surprisingly dynamic patterns of chaparral, hardwood and conifer woodlands in response to wildfire, timber harvest, and wildfire suppression.

It took generations to set the stage for the catastrophic fires of the last decade. It will take several more to change that trajectory. Altering course is going to require hard work on the ground guided by a deeper understanding of the relationship of fire, vegetation and the role of human beings in the landscape.

This presentation is designed to be valuable to members of the public as well as vegetation managers, firefighters and other professionals.

Register in advance: [https://us02web.zoom.us/webinar/register/WN\\_gx6ER\\_V2Tguj1-BkEhL2fw](https://us02web.zoom.us/webinar/register/WN_gx6ER_V2Tguj1-BkEhL2fw)  
You will receive a confirmation email containing information about joining the webinar.

### SAMPLE VEGETATION & FIRE HISTORY RESULTS, SONOMA-NAPA STUDY AREA. 1870 - 2020



#### # Fires, % of Study Area

